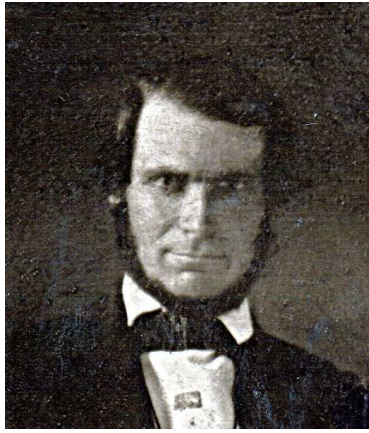


Descendants of William Henry HOLLY



Harriet Newell HOLLY

b. 22 Aug 1848
at Connecticut
d. 20 Mar 1927
at Poughkeepsie, Dutchess, New York

Never married.

Emma Louise HOLLY

b. 12 Nov 1850
at Brooklyn?, New York
d. 24 Jan 1910
at Port Chester, Westchester, New York
m. between 1870 and 1875 at Port Chester,
Westchester, New York

No known living descendants.

John F. MERRITT

b. Nov 1851
at Rye, Westchester, New York
m. between 1870 and 1875
at Port Chester, Westchester, New York

William Webb HOLLY

b. 22 Dec 1852
at Greenwich, Fairfield, Connecticut
d. 30 Oct 1932
at Port Chester, Westchester, New York

Descendants are the
family of Lawrence H.
Kloess, Jr.

William Henry HOLLY

b. 7 Jun 1812
at Stamford, Fairfield, Connecticut
d. 24 Jan 1892
at Mt. Pleasant, Westchester, New York

Margaret MCQUEEN

b. 14 Sep 1818
at Ardrach, Nairn, Scotland
d. 13 May 1886
at Port Chester, Westchester, New York
m. 9 Jun 1847
at Brooklyn, Kings, New York

Mary E. FINCH

b. 1863
at Norwalk, Fairfield, Connecticut
d. 21 Jun 1960
at Newtown, Fairfield, Connecticut
m. 1880

Hattie BALL

b. 4 Jul 1882
at New York
d. 30 Aug 1959
at Miami, Miami-Dade, Florida
m. 1900

James Madison HOLLY

b. 25 Apr 1854
at Fairfield, Connecticut
d. 21 Jan 1928
at Woodbridge Township, Middlesex, New
Jersey
m. 1887

Descendants are the
families of Bill Schardt
and Irene Schardt
Horman.

Irene Maude KELLAN

b. Nov 1861, Pennsylvania

d. 14 Sep 1931
at Woodbridge Township, Middlesex County, NJ

Alexander Newman HOLLY

b. 6 Apr 1858
at Greenwich, Fairfield, Connecticut
d. 19 Apr 1923
at Port Chester, Westchester, New York
m. 11 May 1881 at Port Chester, Westchester,
New York

Descendants are
children of Winifred L.
Holly Tilley and their
families.

Annie Maria GUERNSEY

b. 28 May 1859
at Greenwich, Fairfield, Connecticut
d. 4 Mar 1911
at Port Chester, Westchester, New York
m. 11 May 1881
at Port Chester, Westchester, New York